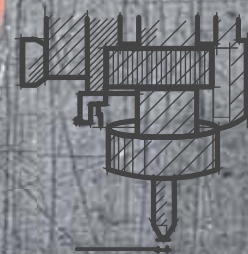


# SPECIAL PARTS HD

Working and Tradition

MADE IN ITALY



**libe**

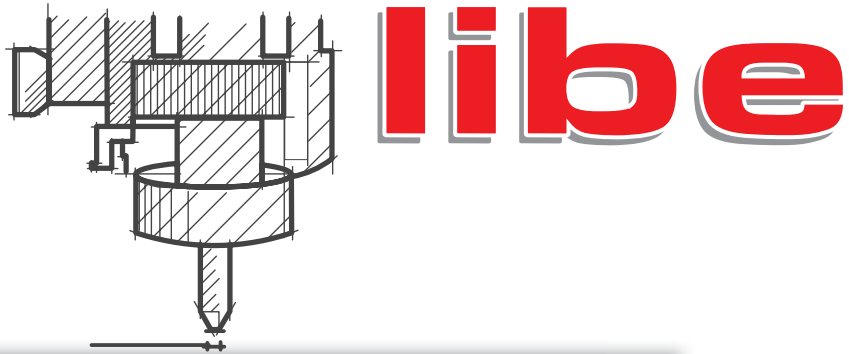
# INDEX

LICENSE SUPPORT PLATE .....	PAG.4
SIDE MOUNT LICENSE PLATE .....	PAG.35
REGISTRATION PAPERS STORAGE TUBE.....	PAG.38
POINT COVER.....	PAG.40
CUSTOMIZATION .....	PAG.42
CUSTOM ACCESSORIES .....	PAG.45
LICENCE SUPPORT LIGHT.....	PAG.54





# INTRODUCTION



To meet the esthetic and customizing requirements of every Harley rider, LIBE SAS have conceived a special parts series for Harley-Davidson.

Unlike anyone else, with our products you can have a guaranteed MADE IN ITALY manufacturing and the possibility of customising the product in addition to your dealer's laser marking or incision.

LIBE SAS is at your back and call for every needed clarifications or suggestions in order to built a professional path together with your staff.



# LICENSE SUPPORT HID

Our license plate series are available for Sportster, Dyna, Softail and Touring model series.

Every aluminum license plate model is designed in Anodized Black and Chrome double version, to meet every aesthetic requirements.

All chrome are aesthetic and with a triple chrome processing to ensure a higher resistance to corrosion as requested by head office.

Every license plate model is available in different sizes, related to the need of every european countries.



**SOME KIND OF  
CUSTOMIZATION**

# MODEL HARLEY DAVIDSON

## SPORTSTER

XL883R SPORTSTER/ROADSTER 883R.....	CL501-502-503-504-507-508-509-510-511-512-513-520-521
XL883L SUPERLOW. ....	CL501-502-503-504-507-508-509-510-511-512-513-520-521
XL1200C SPORTSTER 1200 CUSTOM.....	CL514-515-516-517
XR1200X .....	CL499-500-503-504

## DYNA

FXDB STREET BOB.....	CL505-506.
FXDC SUPER GLIDE CUSTOM.....	CL501-502-503-504-507-508-509-510-511-512-513-520-521
FDL SWITCHBACK .....	CL499-500

## SOFTAIL

FXS BLACKLINE.....	CL499-500
FLSTN SOFTAIL DELUXE .....	CL503-504
FLSTF FAT BOY .....	CL501-502-503-504-507-508-509-510-511-512-513-520-521
FLSTFB FAT BOY SPECIAL.....	CL501-502-503-504-507-508-509-510-511-512-513-520-521
FLSTC HERITAGE SOFTAIL CLASSIC.....	CL501-502-503-504--510-511-512-513

TOURING .....	CL522-523-524-525
---------------	-------------------

# ART. CL 500



License plate support aluminium alloy 6082 milled with CNC machine in CUSTOM BLACK anodized.

Fitted between license plate and plastic support instead of original Harley Davidson rubber.

Equipped with bolts and screws to be fixed to the motorcycle and to the license plate.

License plate fitted directly on the original support.

It is possible to customize it by Laser Marking with your Dealer's name.

The license plate support size is adapted to every european country request.

# ART. CL 499

License plate support aluminium alloy 6082 milled with CNC machine in Polished Chrome.

High quality chromium plating.

Fitted between license plate and plastic support instead of original Harley Davidson rubber.

Equipped with bolts and screws to be fixed to the motorcycle and to the license plate.

LICENSE plate fitted directly on the original support.

It is possible to customize it by Laser Marking with your Dealer's name.

The LICENSE plate support size is adapted to every european country request



## CHROME

# ART. CL 501



License plate support aluminium alloy 6082 milled with CNC machine in CUSTOM BLACK anodized with bracket milled with CNC 5-axis machine.

Equipped with bolts and screws to be fixed to the motorcycle and to the license plate.

It is possible to customize it by Laser Marking with your Dealer's name.

The LICENSE plate support size is adapted to every european country request.

Also equipped with protective fender rubber.

Note: License plate support lay-down is conformed to the current regulations.



# ART. CL 502

License plate support aluminium alloy 6082 milled with CNC machine in Polished Chrome called CUSTOM SILVER with bracket milled with CNC 5-axis machine.

High quality chromium plating

Equipped with bolts and screws to be fixed to the motorcycle and to the license plate.

It is possible to customize it by Laser Marking with your Dealer's name.

The LICENSE plate support size is adapted to every european country request.

Also equipped with protective fender rubber.

Note: License plate support lay-down is conformed to the current regulations.



## CHROME

# ART. CL 518



License plate support aluminium alloy 6082 milled with CNC machine in CUSTOM BLACK anodized with bracket milled with CNC 5-axis machine.

Equipped with bolts and screws to be fixed to the motorcycle and to the license plate.

LICENSE plate support made for **Italy old version (165x165)**.

It is possible to customize it by Laser Marking with your Dealer's name.

Also equipped with protective fender rubber.

Note: License plate support lay-down is conformed to the current regulations.

## BLACK

# ART. CL 519



License plate support aluminium alloy 6082 milled with CNC machine in Polished Chrome called CUSTOM SILVER with bracket milled with CNC 5-axis machine.

High quality chromium plating  
Equipped with bolts and screws to be fixed to the motorcycle and to the license plate.

LICENSE plate support made for **Italy old version (165x165)**.

It is possible to customize it by Laser Marking with your Dealer's name.

Also equipped with protective fender rubber.

Note: License plate support lay-down is conformed to the current regulations.

165X165



## CHROME

11

# ART. CL 503



License plate support aluminium alloy 6082 milled with CNC machine in CUSTOM BLACK anodized to be applied directly on the original support.

Equipped with bolts and screws to be fixed to the motorcycle and to the license plate.

It is possible to customize it by Laser Marking with your Dealer's name.

The LICENSE plate support size is adapted to every european country request.



# ART. CL 504

License plate support aluminium alloy 6082 milled with CNC machine in Polished Chrome called CUSTOM SILVER to be applied directly on the original support.  
High quality chromium.  
Equipped with bolts and screws to be fixed to the motorcycle and to the license plate.

It is possible to customize it by Laser Marking with your Dealer's name.

The LICENSE plate support size is adapted to every european country request.



**CHROME**  
13

# ART. CL 505



License plate support aluminium alloy 6082 milled with CNC machine in CUSTOM BLACK anodized to be applied directly on the original tail light.

Equipped with bolts and screws to be fixed to the motorcycle.

It is possible to customize it by Laser Marking with your Dealer's name.

The LICENSE plate support size is adapted to every european country request.

# ART. CL 506

License plate support aluminium alloy 6082 milled with CNC machine in Polished Chrome called CUSTOM SILVER to be applied directly on the original tail light. High quality chromium. Equipped with bolts and screws to be fixed to the motorcycle.

It is possible to customize it by Laser Marking with your Dealer's name.

The LICENSE plate support size is adapted to every european country request.



## CHROME

# ART. CL 515



License plate support aluminium alloy 6082 milled with CNC CUSTOM BLACK anodized **with laydown bracket.**

The bracket can be applied directly on the original tail light to allow the laydown of the plate.

This version is specially made for motorbike **with** luggage rack.

The bracket and the license plate support are fixed without drilling any original component.

Equipped with bolts and screws to be fixed to tail light and motorcycle. It is possible to customize it by Laser Marking with your Dealer's name.

The LICENSE plate support size is adapted to every european country request.

Note: License plate support laydown is conformed to the current regulations.



# ART. CL 514

License plate support aluminium alloy 6082 milled with CNC machine Polished Chrome called **CUSTOM SILVER with laydown bracket**.

High quality chromium.

The bracket can be applied directly on the original tail light to allow the laydown of the plate.

This version is specially made for motorbike **with** luggage rack.

The bracket and the license plate support are fixed without drilling any original component.

Equipped with bolts and screws to be fixed to tail light and motorcycle. It is possible to customize it by Laser Marking with your Dealer's name.

The license plate support size is adapted to every european country request.

Note: License plate support laydown is conformed to the current regulations.

**1200 CUSTOM**



**CHROME**  
17

# ART. CL 517



1200 CUSTOM

License plate support aluminium alloy 6082 milled with CNC machine inCUSTOM BLACK anodized.

Equipped with bolts and screws to be fixed to the motorcycle and to the license plate.

The LICENSE plate support can be fixed to the tail light for motorbike **without** luggage rack.

It is possible to customize it by Laser Marking with your Dealer's name.

The LICENSE plate support size is adapted to every european country request.

# ART. CL 516

License plate support aluminium alloy 6082 milled with CNC machine in Polished Chrome called CUSTOM SILVER.

High quality chromium.

Equipped with bolts and screws to be fixed to the motorcycle and to the license plate.

The LICENSE plate support can be fixed to the tail light for motorbike **without** luggage rack.

It is possible to customize it by Laser Marking with your Dealer's name.

The LICENSE plate support size is adapted to every european country request.

**1200 CUSTOM**



## CHROME

# ART. CL 508



License plate support aluminium alloy 6082 milled with CNC machine inCUSTOM BLACK anodized.

Equipped with bolts and screws to be fixed to the motorcycle and to the license plate.

Characterized by **turn signal relocator** and equipped with a shaped washer, grower washer and a nut , able to couple perfectly to the original turn signals.

Each LICENSE support plate element couplings are done by hidden screws just to avoid driving vibrations. It is possible to customize it by Laser Marking with your Dealer's name.

The LICENSE plate support size is adapted to every european country request.

Note: License plate support lay-down is conformed to the current regulations.



# ART. CL 507

License plate support aluminium alloy 6082 milled with CNC machine in Polished Chrome called CUSTOM SILVER.

High quality chromium.

Equipped with bolts and screws to be fixed to the motorcycle and to the license plate.

Characterized by **turn signal relocator** and equipped with a shaped washer, grower washer and a nut, able to couple perfectly to the original turn signals.

Each LICENSE support plate element couplings are done by hidden screws just to avoid driving vibrations. It is possible to customize it by Laser Marking with your Dealer's name.

The LICENSE plate support size is adapted to every european country request.

Note: License plate support lay-down is conformed to the current regulations.



**CHROME**  
21

# ART. CL 520



License plate support aluminium alloy 6082 milled with CNC machine inCUSTOM BLACK anodized.

Equipped with bolts and screws to be fixed to the motorcycle and to the license plate.

Characterized by **turn signal relocater** for **Kellermann** turn signals type.

It is possible to customize it by Laser Marking with your Dealer's name.

The LICENSE plate support size is adapted to every european country request.

Note: License plate support lay-down is conformed to the current regulations.

# ART. CL 521



License plate support aluminium alloy 6082 milled with CNC machine in Polished Chrome called CUSTOM SILVER.

High quality chromium.

Equipped with bolts and screws to be fixed to the motorcycle and to the license plate.

Characterized by **turn signal relocator** for **Kellermann** turn signals type.

It is possible to customize it by Laser Marking with your Dealer's name.

The LICENSE plate support size is adapted to every european country request.

Note: License plate support lay-down is conformed to the current regulations.



## CHROME

# ART. CL 522



LICENSE plate support aluminium alloy 6082 milled with CNC machine in **CUSTOM BLACK** anodized. Equipped with bolts and screws to be fixed to the motorcycle and to the license plate.  
LICENSE plate support for **Touring** with LICENSE light.

It is possible to customize it by Laser Marking with your Dealer's name.

The LICENSE plate support size is adapted to every european country request.



# ART. CL 523

NEW  
PRODUCT

License plate support aluminium alloy 6082 milled with CNC machine in Polished Chrome called CUSTOM SILVER.

High quality chromium.

Equipped with bolts and screws to be fixed to the motorcycle and to the license plate.

LICENSE plate support for **Touring** with LICENSE light.

It is possible to customize it by Laser Marking with your Dealer's name.

The LICENSE plate support size is adapted to every european country request.



## CHROME

# ART. CL 509



License plate support aluminium alloy 6082 milled with CNC machine in CUSTOM BLACK anodized and Polished Chrome called CUSTOM SILVER.

High quality chromium.

Equipped with bolts and screws to be fixed to the motorcycle and to the license plate.

Characterized by **turn signal relocater** and equipped with a shaped washer, grower washer and a nut , able to couple perfectly to the original turn signals.

Each LICENSE support plate element couplings are done by hidden screws just to avoid driving vibrations.

It is possible to customize it by Laser Marking with your Dealer's name.

The LICENSE plate support size is adapted to every european country request.

Note: License plate support lay-down is conformed to the current regulations.



# ART. CL 510

License plate support aluminium alloy 6082 milled with CNC machine in Polished Chrome called CUSTOM SILVER with bracket milled with CNC 5-axis machine.

High quality chromium plating

Equipped with bolts and screws to be fixed to the motorcycle and to the license plate.

It is possible to customize it by Laser Marking with your Dealer's name.

The LICENSE plate support size is adapted to every european country request.

Also equipped with protective fender rubber.

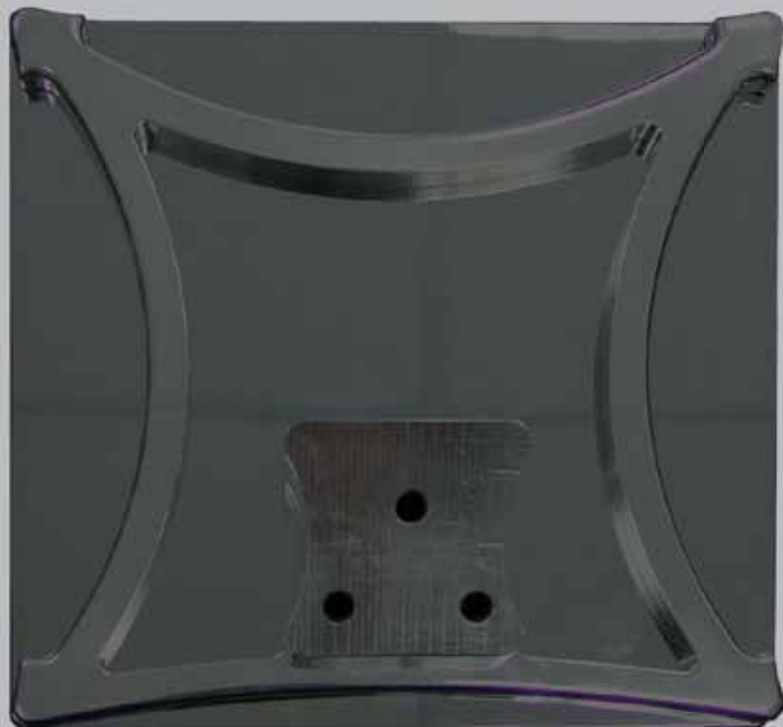
Note: License plate support lay-down is conformed to the current regulations.

License plate support aluminium

**580 GR-1,28LB**



# ART. CL 511



**580 GR-1,28LB**

alloy 6082 milled with CNC machine in Custom Black anodized with bracket milled with CNC 5-axis machine.

High quality chromium plating

Equipped with bolts and screws to be fixed to the motorcycle and to the license plate.

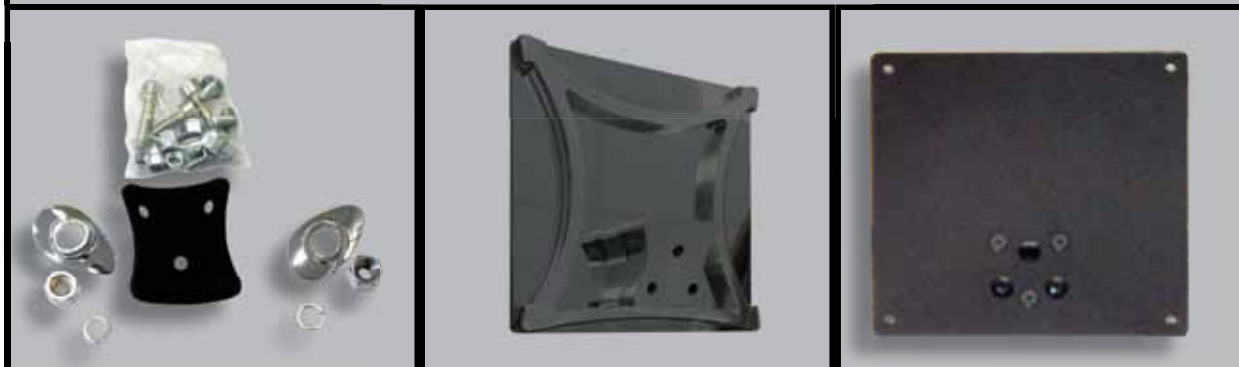
It is possible to customize it by Laser Marking with your Dealer's name.

The LICENSE plate support size is adapted to every european country request.

Also equipped with protective fender rubber.

Note: License plate support lay-down is conformed to the current regulations.

License plate support aluminium alloy 6082 milled with CNC machine



# ART. CL 512

**NEW  
PRODUCT**

ne in Custom Black anodized and Polished Chrome called CUSTOM SILVER with bracket milled with CNC 5-axis machine.

High quality chromium plating  
Equipped with bolts and screws to be fixed to the motorcycle and to the license plate.

It is possible to customize it by Laser Marking with your Dealer's name.

The LICENSE plate support size is adapted to every european country request.

Also equipped with protective fender rubber.

Note: License plate support lay-down is conformed to the current regulations.

License plate support aluminium alloy 6082 milled with CNC machi-

**580 GR-1,28LB**





# ART. CL 513



**580 GR-1,28LB**

ne in Custom Black anodized and Polished Chrome called CUSTOM SILVER with bracket milled with CNC 5-axis machine.

High quality chromium plating

Equipped with bolts and screws to be fixed to the motorcycle and to the license plate.

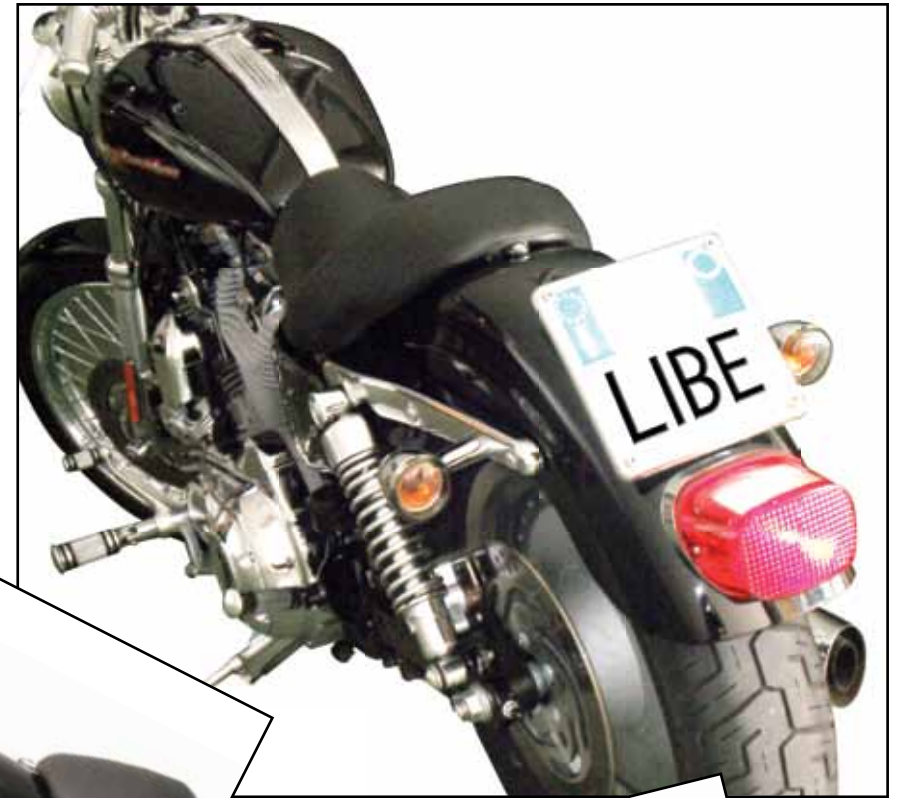
It is possible to customize it by Laser Marking with your Dealer's name.

The LICENSE plate support size is adapted to every european country request.

Also equipped with protective fender rubber.

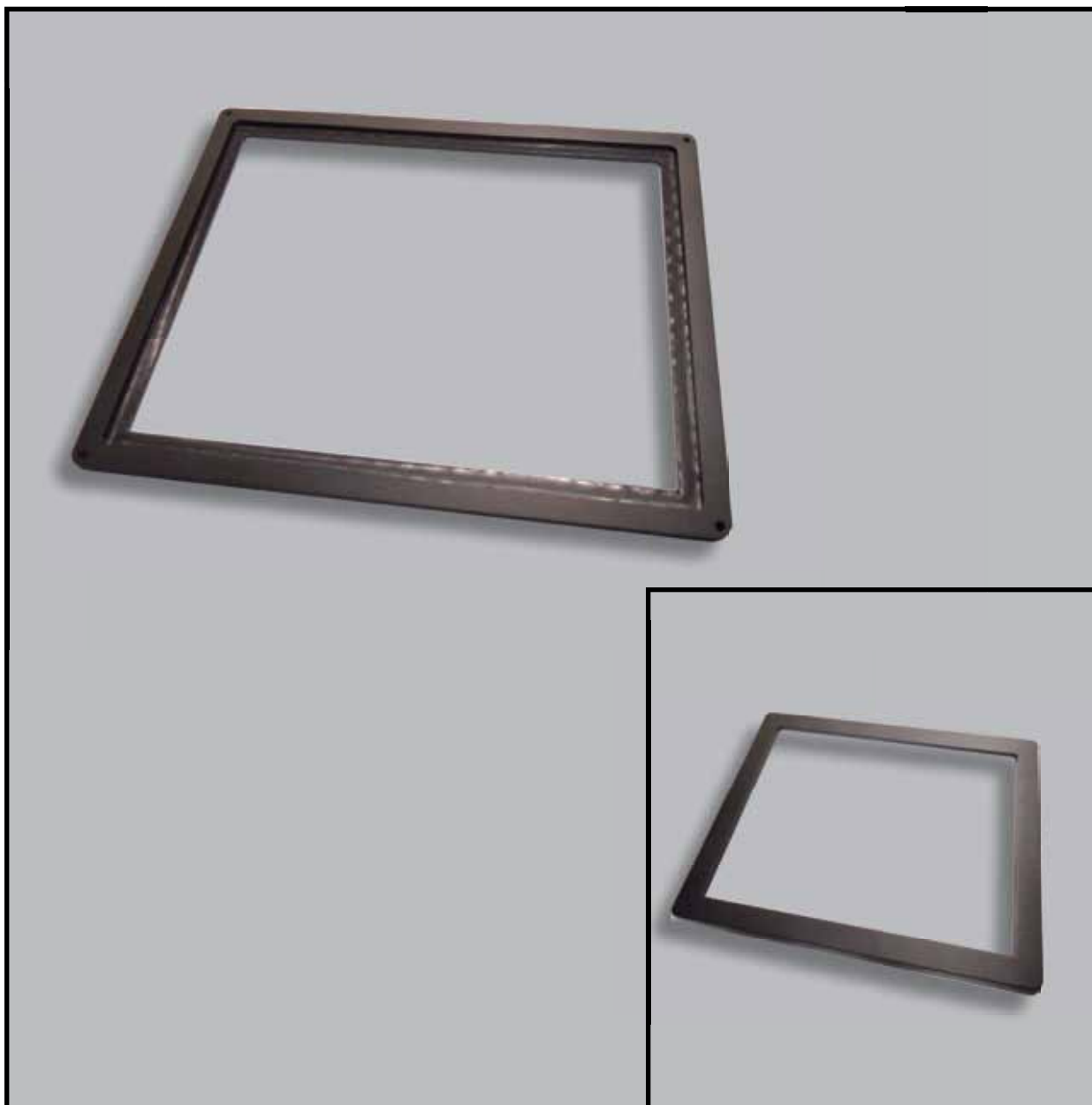
Note: License plate support lay-down is conformed to the current regulations.





**SHOWING PICTURE  
OF SOME OUR LICENSE  
PLATE SUPPORT**

# ART. CL 526



Frame for license plate support aluminium alloy 6082 milled with CNC machine in CUSTOM BLACK anodized to be applied on every our support plate models.

It is possible to customize it by Laser Marking with your Dealer's name.

The LICENSE plate support size is adapted to every european country request.

**BLACK**  
32

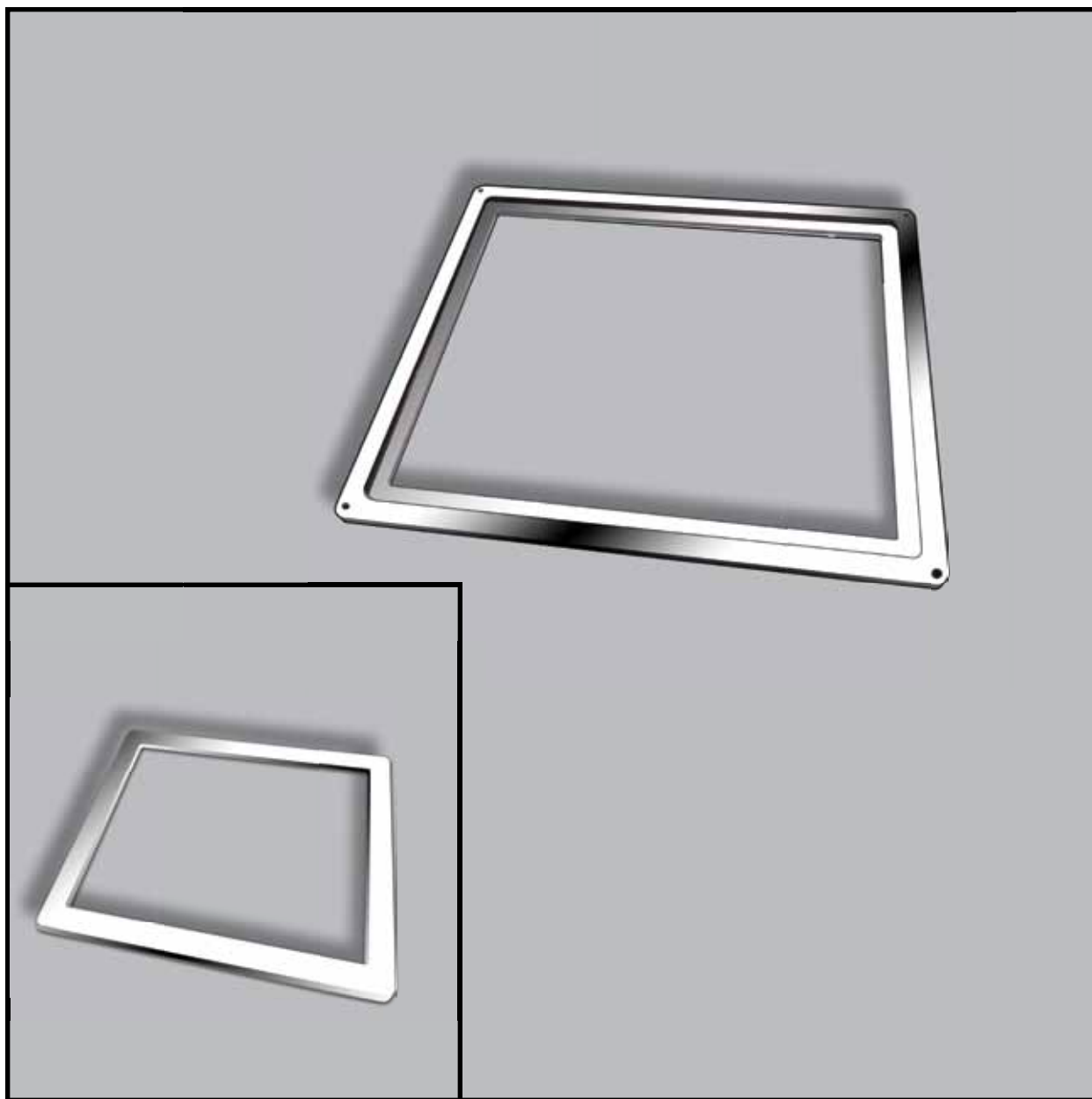


# ART. CL 527

Frame for license plate support aluminium alloy 6082 milled with CNC machine in Polished Chrome called CUSTOM SILVER to be applied on every our support plate models.

It is possible to customize it by Laser Marking with your Dealer's name.

The LICENSE plate support size is adapted to every european country request.



## CHROME





## **EXAMPLES OF MOUNTING SIDEMOUNT LICENCE PLATE**





# SIDEMOUNT LICENSE PLATE

AVAILABLE ALL SIDE MOUNT LICENCE PLATE SUPPORT  
FOR THIS MODELS:

SOFTAIL

SPORTY

DYNA

ROCKER C





# SIDEMOUNT LICENSE PLATE

License plate support made for side mounting in aluminium alloy 6082 milled with CNC machine in Custom Black anodized or Polished Chrome called CUSTOM SILVER with bracket milled with CNC 5-axis machine.

High quality chromium plating  
Equipped with bolts and screws to be fixed to the motorcycle and to the license plate.

It is possible to customize it by Laser Marking with your Dealer's name.

The LICENSE plate support size is adapted to every european country request.

The kit includes: nut 1" lowered, 1mm stainless steel washer and anti-rotation system.

The bracket is available in four different dimension:

**S:** 90mm (160gr-complete 630gr)

**M:** 185mm (310 gr-complete 780gr)

**L:** 300mm (460 gr-complete 930gr)

**XL:** 400mm made for tire cover plate (700gr-complete 1340gr)

S



M



L



XL



## SIDEMOUNT LICENSE PLATE CODE AVAILABLE IN FOUR SIZES.

### SOFTAIL/SPORTY/DYNA

**S:** CL 532 BLACK-CL 533 CHROME

**M:** CL 534 BLACK-CL 535 CHROME

**L:** CL 536 BLACK-CL 537 CHROME

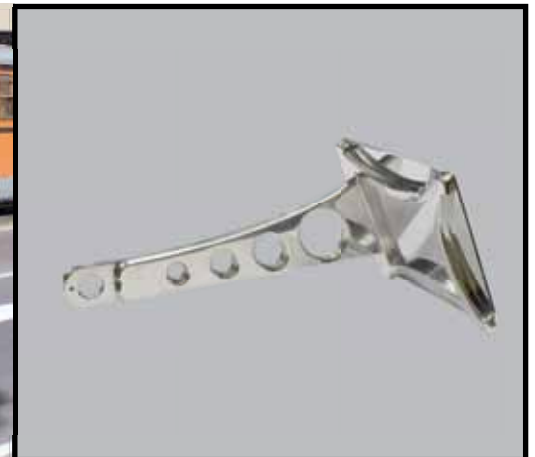
**XL:** CL 538 BLACK-CL 539 CHROME

### ROCKER C

CL 540 BLACK-CL 541 CHROME



35



37

# REGISTRATION PAPERS STORAGE TUBE ART. CL 609



Tube in aluminium alloy 6082 turned on a lathe in CUSTOM BLACK anodized to be applied on the motorbike's frame to storage the registration papers.

Equipped with water- resistant O-ring and double caps.

The registration papers storage tube is equipped with different clamps with Clutch Cable's hole, for every frame models.

The clamps are available for that kind of frame:

Sportster-Touring **CL 609 ST**

Dyna- V-Rod **CL 609 DV**

Softail **CL 609 S**



# REGISTRATION PAPERS STORAGE TUBE ART. CL 610

Tube in aluminium alloy 6082 turned on a lathe in Polished Chrome called CUSTOM SILVER to be applied on the motorbike's frame to storage the registration papers.

Equipped with water- resistant O-ring and double caps.

The registration papers storage tube is equipped with different clamps with Clutch Cable's hole, for every frame models.

The clamps are available for that kind of frame:

Sportster-Touring **CL 610 ST**

Dyna- V-Rod **CL 610 DV**

Softail **CL 610 S**



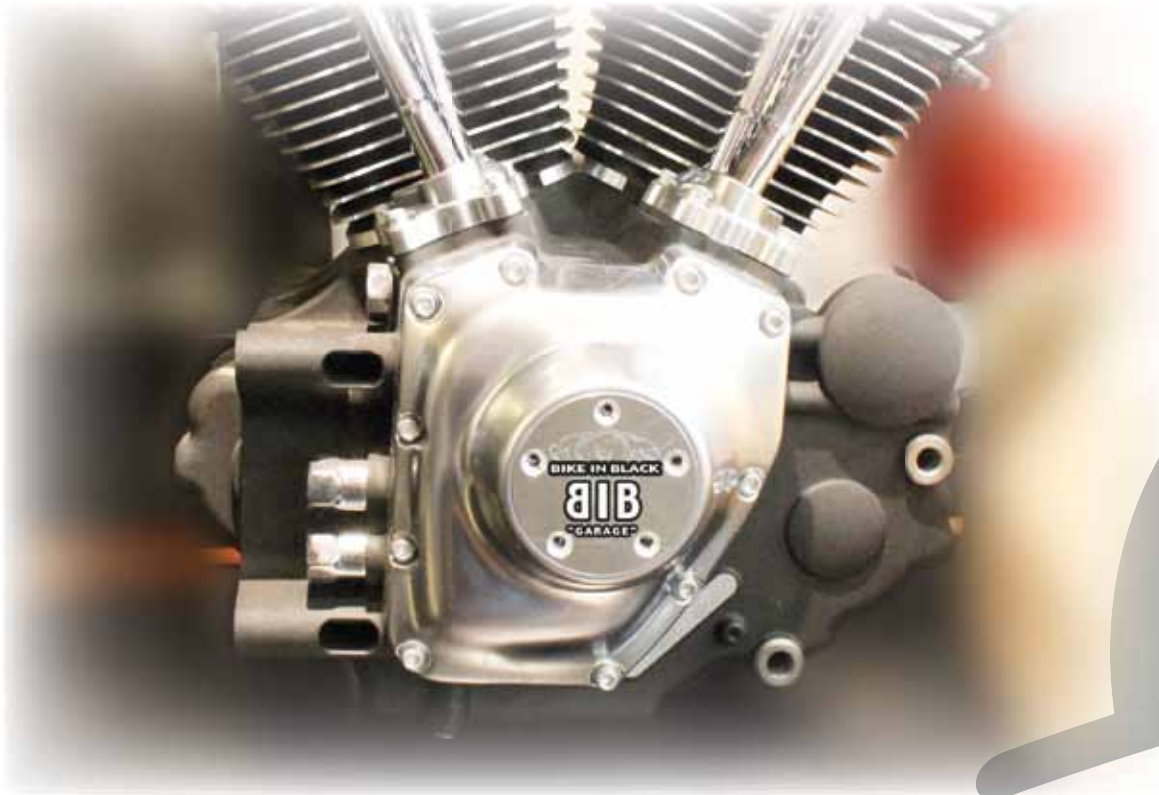
## CHROME





# POINT COVER

**ENGRAVING AND POLISH  
POINTS COVER**





**EVOLUTION 883 CARTER  
(CL 601 BLACK ;CL 602 CHROME)**



**TWIN CAM 96 CARTER  
(CL 603 BLACK;CL 604 CHROME)**



**TWIN CAM 103 CARTER  
(CL 605 BLACK;CL 606 CHROME)**



# **CUSTOMIZATIONS HD ON YOURS ORIGINAL PARTS**

**SEND US A PICTURE OR A LOGO  
THAT U WOULD ON YOUR BIKE, WE  
PUT IT ON YOUR CHOSEN PARTS**







# SERVICE

BUILT YOUR IDEAS  
WITH JUST ONE CLICK

**NO PROJECT  
IS UNREACHABLE  
WITH LIBE**

**MAKE A SHOT TO DETAIL THAT  
YOU WOULD LIKE TO CUSTOMI-  
ZE.**

**OUR STAFF WILL SEND YOU  
BACK A PREVIEW OF FINAL EF-  
FECT BEFORE MAKING.**





NEW  
PRODUCT

# CUSTOM ACCESSORIES



**WE CAN MAKE ON YOUR  
REQUEST OR DRAWING  
PARTICULAR AND MEC-  
CANICAL COMPONENT,  
MADE IN ALLUMINUM  
WITH CNC MACHINE IN  
CHROME, ANODIZED AND  
POLISHED.  
EVERY CHROMIUM PLA-  
TING IS GUARANTEED  
FOR A BETTER CORRO-  
SION RESISTANCE.**



**LASER ENGRAVING ON POINT  
CARTER IN POLISHED CHROME**



**LASER ENGRAVING ON POINT  
CARTER IN CUSTOM BLACK  
ANODIZED**

## **EXAMPLES OF LASER ENGRAVING**

libe







**EXAMPLES OF LASER ENGRAVING**



## EXAMPLES OF LASER ENGRAVING





**EXAMPLES OF LASER ENGRAVING**



## EXAMPLES OF LASER ENGRAVING





**EXAMPLES OF LASER ENGRAVING**





## EXAMPLES OF LASER ENGRAVING



# LICENCE SUPPORT LIGHT



Light support aluminium alloy 6082 milled with CNC machine in Custom Black anodized or in Polished Chrome called CUSTOM SILVER with bracket milled with CNC 5-axis machine.

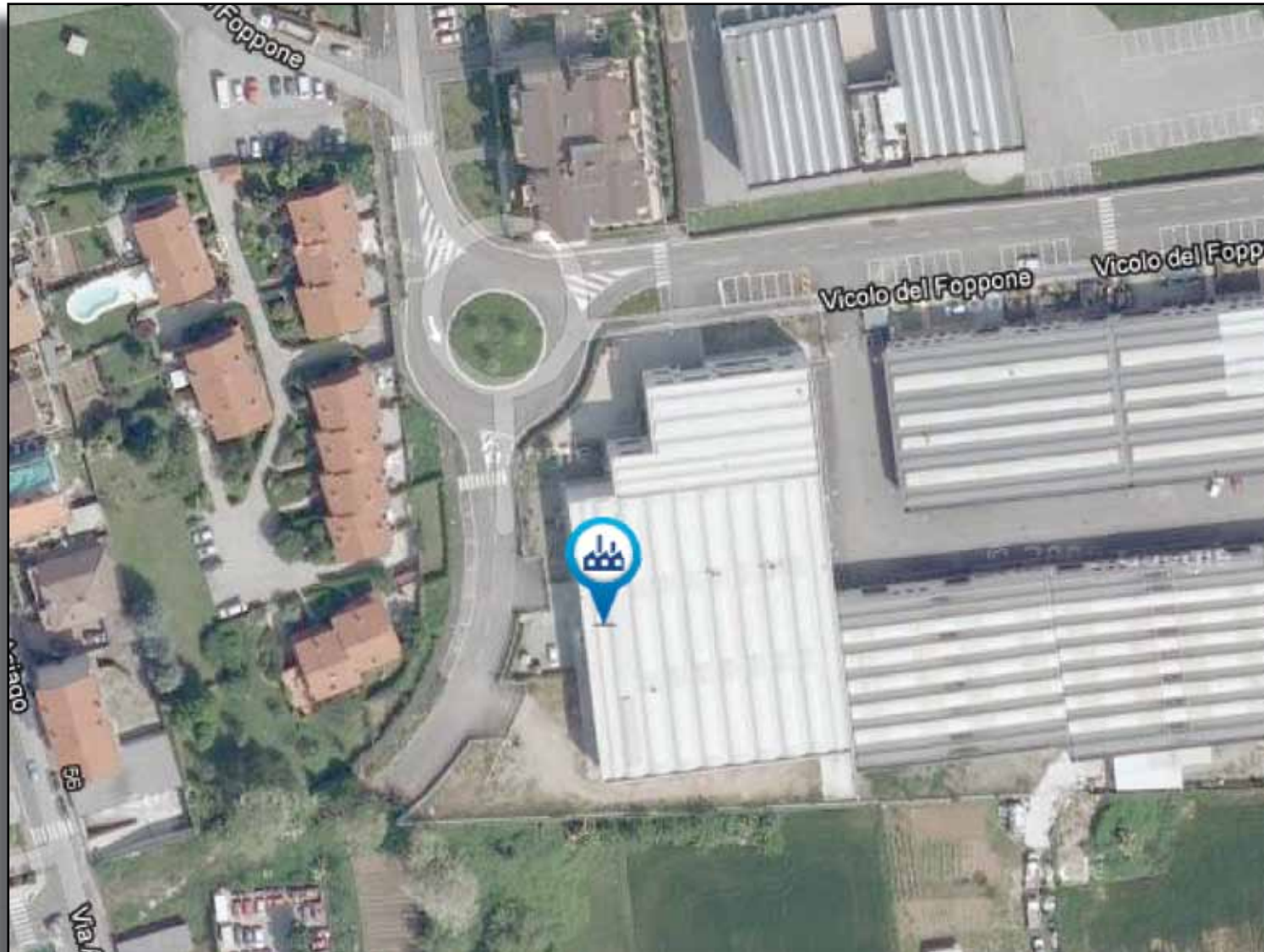
High quality chromium plating  
Light support for each our license support models.

Available in red or white light.

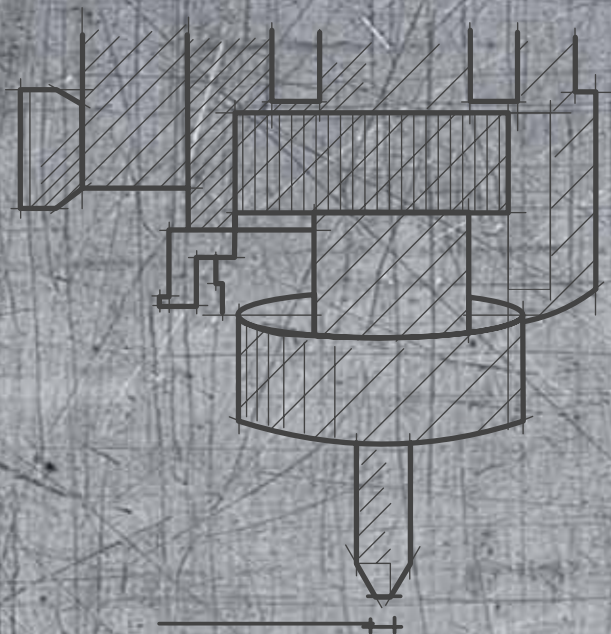
**LIGHT SUPPORT BLACK CL 611**  
**LIGHTSUPPORT CHROME CL 612**



# WE ARE HERE







# libe

**LIBE sas di Bogani Agnese & C.**

Via del Foppone 14 - 20813 Bovisio Masciago (MB)

Tel: +39 (0)362 1796379 - Fax: +39 (0)362 1796380

[www.libeincisioni.com](http://www.libeincisioni.com)

[info@libeincisioni.com](mailto:info@libeincisioni.com)

